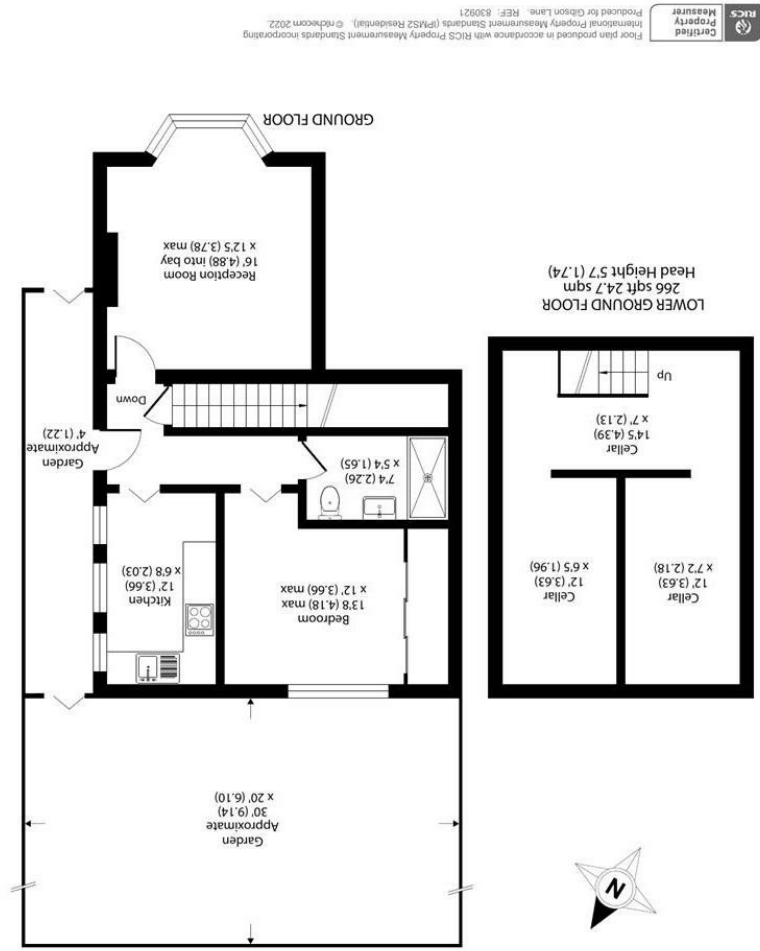


All appliances listed in these details are only 'as seen' and have not been tested by Gibson Lane, nor have we sought certification of warranty or service, unless otherwise stated. Measurements, areas and distances are approximate. Floor plans and photographs are for guidance purposes only and must not be relied upon for any purpose. These details are offered on the understanding that all negotiations are made through this company. Neither these particulars, nor verbal representations, form part of any offer or contract, and their accuracy cannot be guaranteed.

Energy Efficiency Rating	Environmental Impact (CO ₂) Rating
A	A
B	B
C	C
D	D
E	E
F	F
G	G



34 Richmond Road
 Kingston upon Thames
 Surrey
 KT2 5ED
 www.gibsonlane.co.uk
 Tel: 020 8546 5444





Brunswick Road
 Kingston Upon Thames KT2 6SB



Brunswick Road

Kingston Upon Thames KT2 6SB

Guide Price £400,000

A stunning one bedroom garden apartment converted from this elegant double fronted Victorian building ideally situated for local amenities.

Description

A delightful one bedroom apartment converted from this elegant double fronted Victorian building and having the real benefit of its own front door and 30ft rear garden. Internally the property is presented to an excellent standard with features of note to include an impressive 15'8 reception room with ornate fireplace, large basement area, modern fitted kitchen, spacious double bedroom and luxury shower room. Viewings are highly recommended to appreciate what this delightful home has to offer.

Situation

Brunswick Road is a popular North Kingston address conveniently positioned between Richmond Park and the River Thames. The property is ideally situated for both Norbiton and Kingston stations giving direct access into Waterloo. The A3 which serves both London & the M25 is easily accessible by car. Kingston town centre with its array of shops, restaurants and bars is a short distance away. The standard of schooling in the immediate area is excellent within both the private and state sectors.

Tenure: Leasehold

Local Authority: Kingston upon Thames

